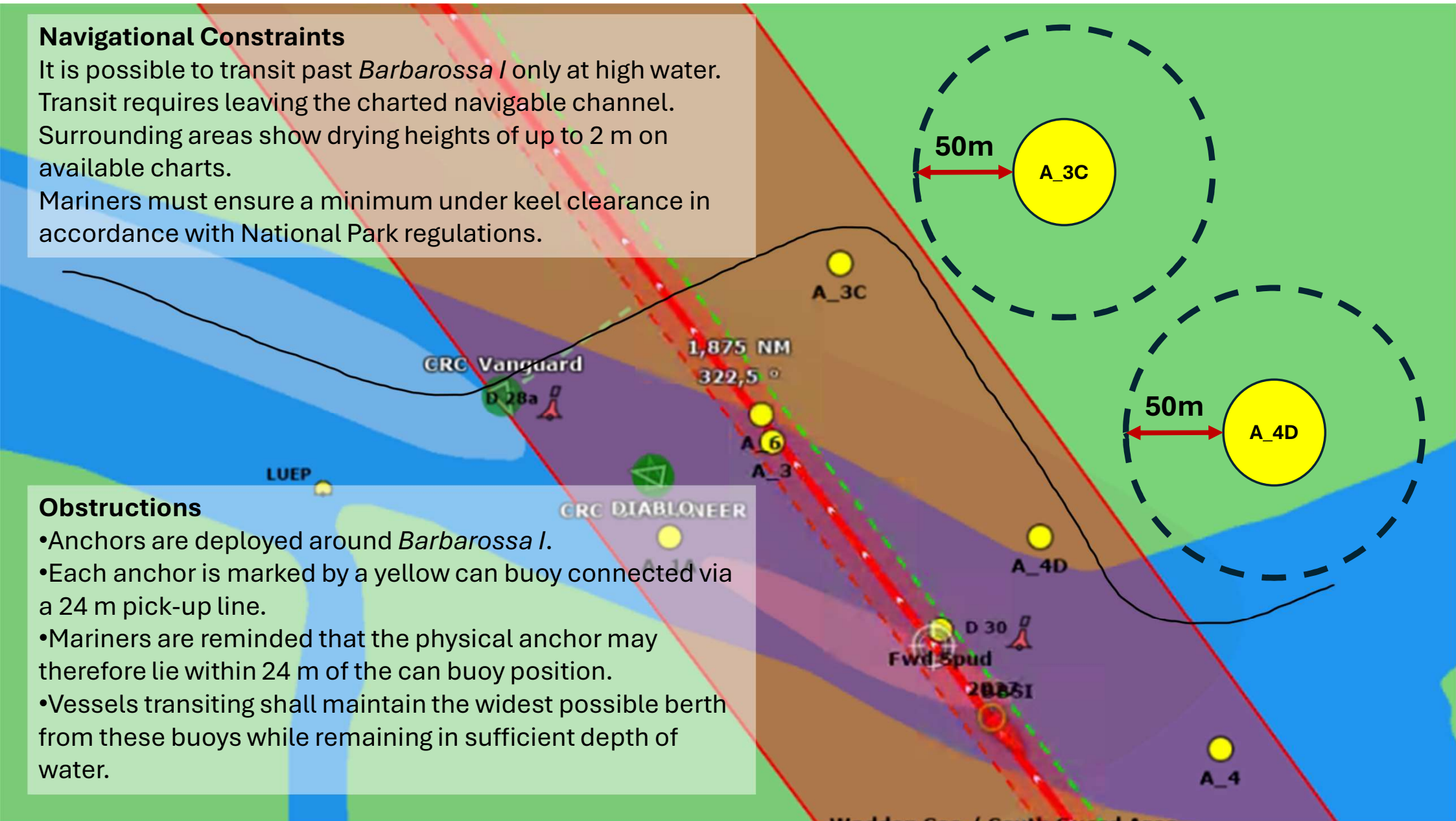


Navigational Constraints

It is possible to transit past *Barbarossa I* only at high water. Transit requires leaving the charted navigable channel. Surrounding areas show drying heights of up to 2 m on available charts. Mariners must ensure a minimum under keel clearance in accordance with National Park regulations.

Obstructions

- Anchors are deployed around *Barbarossa I*.
- Each anchor is marked by a yellow can buoy connected via a 24 m pick-up line.
- Mariners are reminded that the physical anchor may therefore lie within 24 m of the can buoy position.
- Vessels transiting shall maintain the widest possible berth from these buoys while remaining in sufficient depth of water.



Guard Vessels

Guard vessels are tasked primarily with the protection and monitoring of the Barbarossa I work site. They may, if positioned at the extremities of the anchor spreads, be able to provide additional situational awareness for passing traffic. No escort service is to be assumed. Guard vessels' primary task remains to inform, report and assist, not to conduct navigation guidance.

Speed and Wash Restrictions

All vessels transiting in the vicinity of Barbarossa I shall proceed at minimum speed compatible with safe navigation.
Maximum permitted speed: 3 knots over the ground.
Minimum wake is to be maintained at all times.

